



13 Snowdon Avenue Carlingford, NSW



4



2



2

## Immaculate and Ideally Positioned Family Home

Ideally situated amongst the peaceful and leafy streets of Carlingford this stylish single story family home offers the highly enviable mix of both lifestyle and convenience.

Move in ready whilst also providing additional scope to either renovate to your own personal taste or completely rebuild your forever home on a substantial land holding of approximately 771sqm

Boasting a wide frontage with manicured gardens, a highly functional floor plan, and sunlit interiors, this immaculate home presents an exceptional opportunity to growing families.

### Key Features:

- L shaped lounge and dining room with polished timber flooring flowing out onto outdoor e

Price: \$1,617,000  
 Property Type: House  
 Land: 771 m2

Council Rates: \$411.70 p/q

**Peter Hunt**

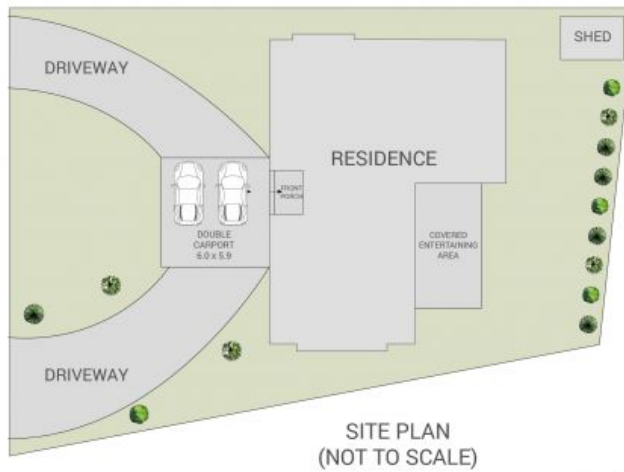
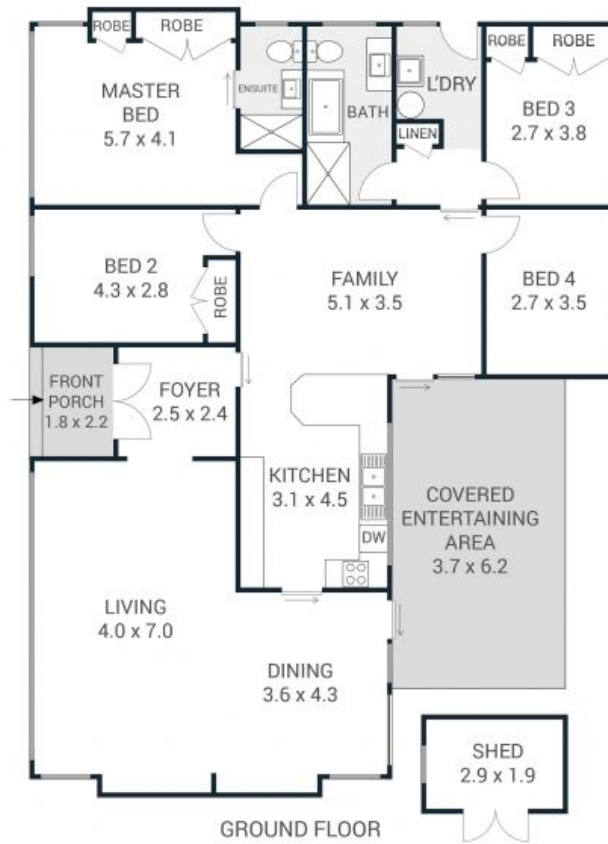
0434 821 219

[peter@huntrealestate.com.au](mailto:peter@huntrealestate.com.au)



# 13 Snowdon Avenue, Carlingford

Total Internal: 155sqm  
Total External: 616sqm  
Total Land: 771sqm



# HUNT

Please note that the information contained in this floor plan is provided by reliable sources, we cannot guarantee its accuracy. It is intended as a guide only. Interested parties should rely on their own enquiry. Drawing not to scale. Dimensions are approximate.