



104/38 Victoria Street Epping, NSW



3



2



2

DEPOSIT TAKEN

DEPOSIT TAKEN

Ideally set within Epping's finest "Regency Apartments" this expansive, and beautifully maintained, three bedroom apartment boasts exceptional living within the heart of Epping.

Showcasing a North Easterly aspect and a house-like scale of 222sqm on title this executive apartment exceeds in both indoor and outdoor appeal. Located only a short walk from Epping Station and an array of local restaurants, and cafes, this property exceeds in both lifestyle and convenience.

What's important to you

- Expansive and zoned living and dining space featuring A/C, gas point, and direct access

Price: \$720 pm
 Property Type: Apartment
 Date Available: Thursday, 9th July 2020

Belinda Falconer

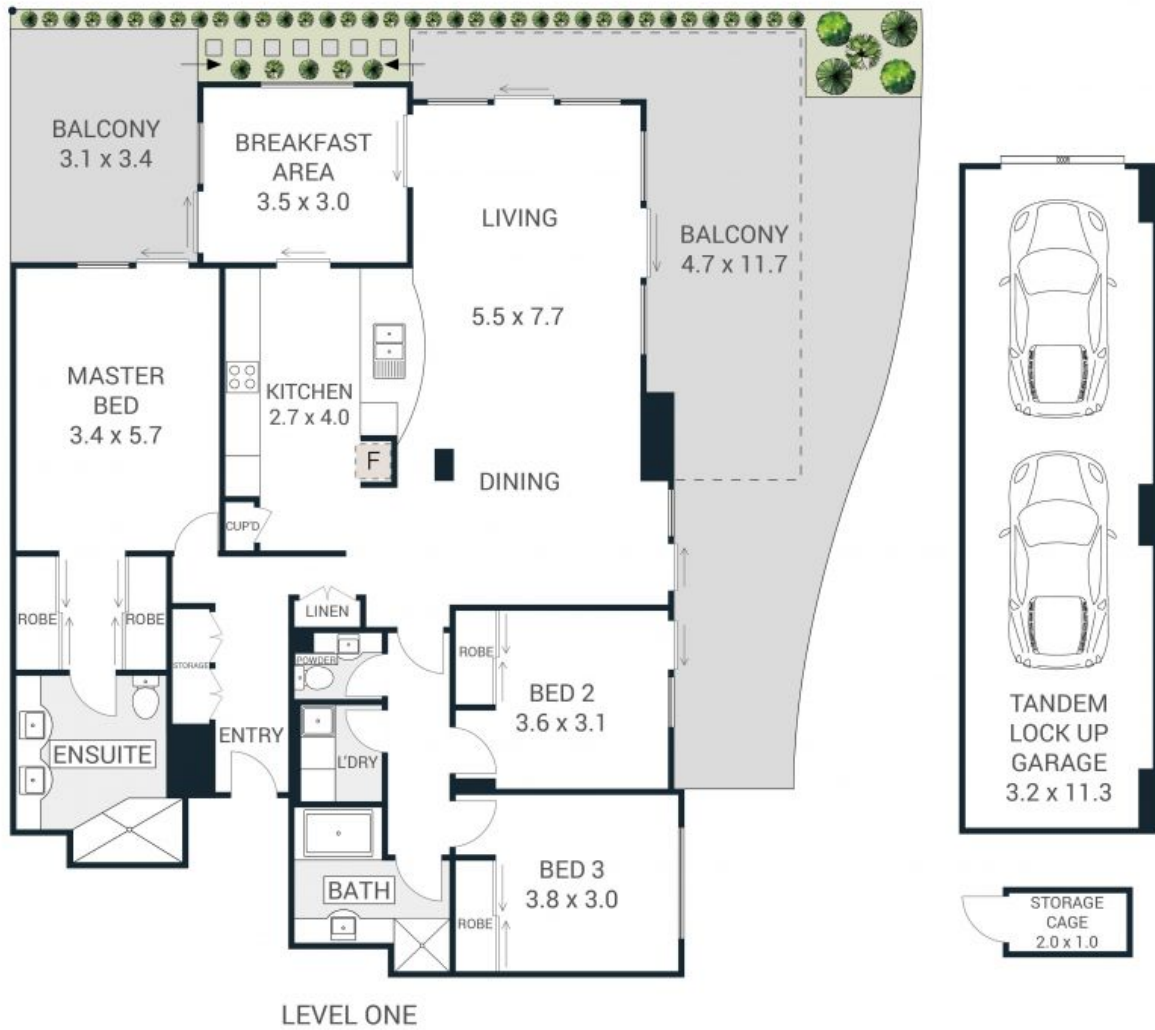
0414 767 063

belinda@huntrealestate.com.au



104/38 Victoria Street, Epping

Total Internal: 143sqm
Total External: 110sqm
Total Area: 253sqm



HUNT

Please note that the information contained in this floor plan is provided by reliable sources, we cannot guarantee its accuracy. It is intended as a guide only. Interested parties should rely on their own enquiry. Drawing not to scale. Dimensions are approximate.

104/38 Victoria Street

Epping, NSW